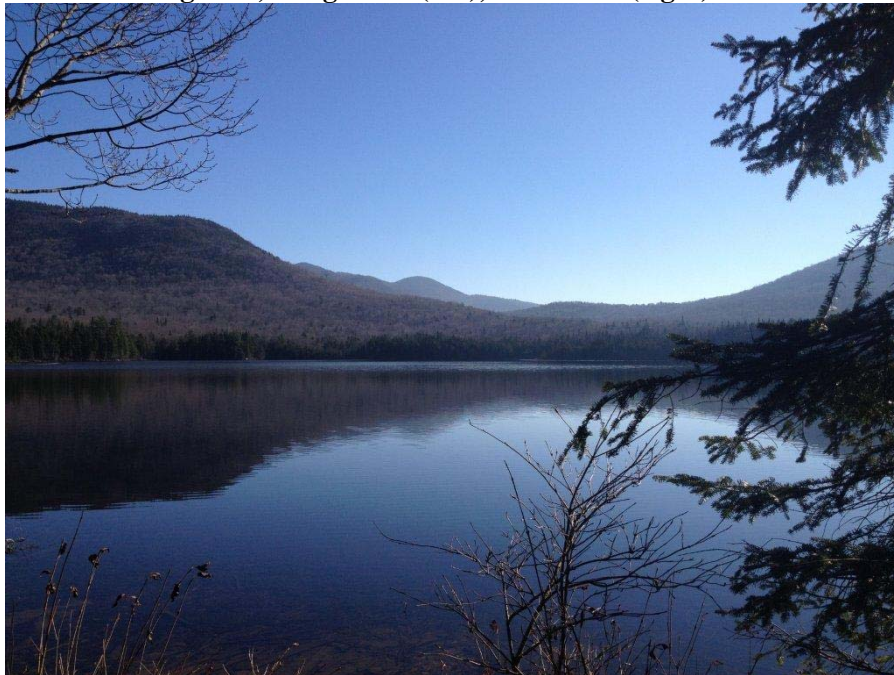


This is Salmon Pond Looking East, Tongue Mt (left), Tirrell Mt (right) & Dun Brook Mt (in distant)



Salmon Pond Club

Check out our web site (salmonpond.com)

- Located in the Town of Indian Lake NY, in the center of the Adirondack Park
- Established in 1951
- 2,300 leased acres, nearly surrounded by NYS land (See Harvest Map on page 3)
- Main Camp was a Finch Pruyn Lumber Camp in the 1940's
- Membership dues are \$480/yr., includes accompanied family members use (see page #3)
- Use activities are:
 - Hunting (large and small game) and trapping
 - Snowmobiling, x-country skiing and snowshoeing
 - Fishing and ice fishing,
 - 4- Wheeling
 - Camping (tents & mobile units at the beach) and picnics
 - Hiking and mountain bike riding
 - Boating, canoeing & kayaking
- Main Camp Sleeps 24 and new Upper Camp Sleeps 10
- Currently (12-29-14) there are 48 members our By-Laws allow for 60
- During hunting season a cook provides the weekend meals, the cost is \$30/weekend
- Snowmobile trail connects to the Indian Lake / Newcomb trail (Long Lake, Raquette Lake Etc.)
- Salmon Pond is 80 acres in size with two feeder brooks and one outlet
 - It has a beach area with floating rafts and camping space
 - There is also a lean-to at the opposite end of the pond
- We stock the pond with native brook trout
- Club owned generators provide power and gas lights are also available
- The two camps are at the base of Tirrell & Tongue Mts. Dun Brook & Fishing Brook Mts. are also on our lease

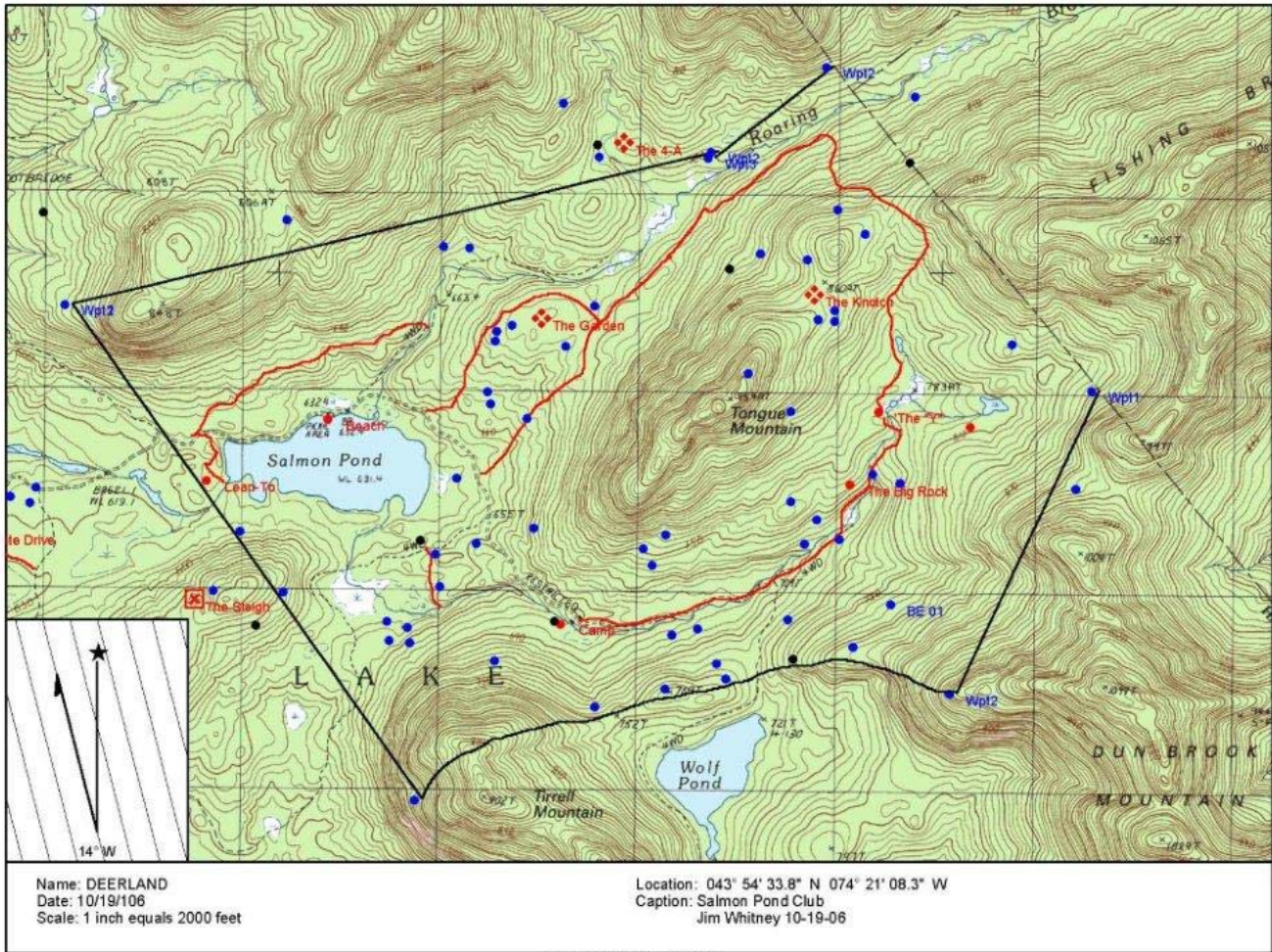


Pictures are:

New upper camp, main camp (bunk room left side, kitchen in center and “great room” right side), snowmobile group, lunch in “great room”, view looking towards generator building and a successful day hunting



Here is a map showing our boundaries and some of the deer (blue dots) & bear (black dots) harvest points, red dots are places and red roads are old logging roads



Note: The club dues are \$480/year (four quarterly payment of \$120 ea.). Each member is required to put in two work days per year or pay \$100 for each day. Each member is also required to sell or purchase 50 Club raffle tickets each year for a cost of \$100, if purchased you are entitled for a chance of winning one of the five prizes.

Contact Ralph Coon (club Secretary) for more information (518-438-6335) or print out application from www

